



Allpro RMM Managed Backup



KEY FEATURES

Block Level Infinite Incremental Backup

I2 Technology™ means never having to do another full backup, drastically reducing the backup time, storage space, network traffic, and workload of your servers.

Recover Your Data to Dissimilar Hardware

Can perform a bare metal restore of your data to dissimilar hardware. You don't have to worry about purchasing that new server anymore!

Virtual Server Support

Backup your virtual servers with the same software that you use to back up your physical servers.

Supreme Flexibility

Recover your data from nearly any point in time, whether it is just one file or a full restore.

Full Transparency Through Reporting

Wide range of detailed reports are provided monthly to ensure that you know what is happening and that you can breathe easy knowing that your data is protected.

Fully Managed System

We monitor the software to ensure it is always working, and will act immediately if there is an issue.

THREATS FACING SMB's TODAY

- Loss of Data
- Failed Restores
- Costly Upkeep
- Unreliable Systems
- Compliance
- Cost of Downtime

“75% of small and midsize businesses rank data loss as the most significant risk to their business.” – *Applied Research*

REDUCING THE COST OF DATA ASSURANCE

What would be the cost to your business if you lost your critical data?

Your business data is the lifeblood of your company and the amount you are collecting and storing is growing all the time. Imagine the impact if you lost a day's data, a week's data, or a year's data, due to inadequate or infrequent back-up processes. What would happen? Could you recover?

A managed backup service from Allpro Technology LLC ensures that all files are automatically backed up as frequently as every 15 minutes if needed. And it will likely cost less than your monthly phone bill. So, how much is **your** data worth?

DATA RECORDS ARE LOST OR STOLEN AT THE FOLLOWING FREQUENCY



EVERY DAY

4,542,204

Records



EVERY HOUR

189,258

Records



EVERY MINUTE

3,154

Records



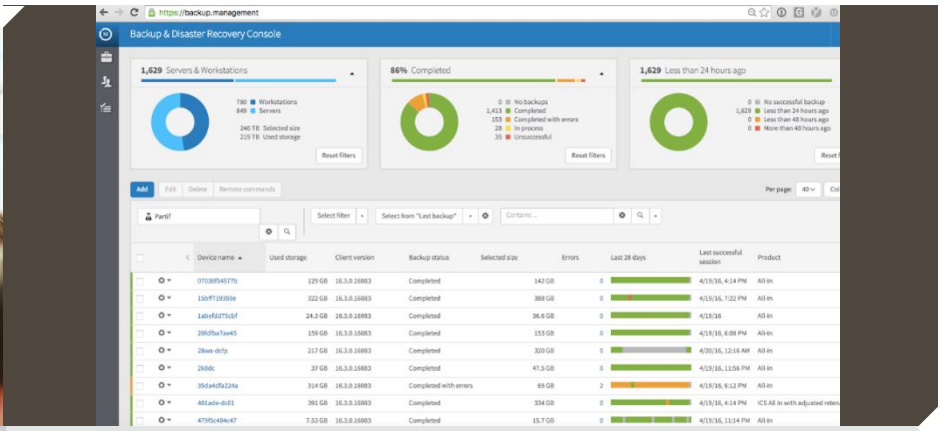
EVERY SECOND

53

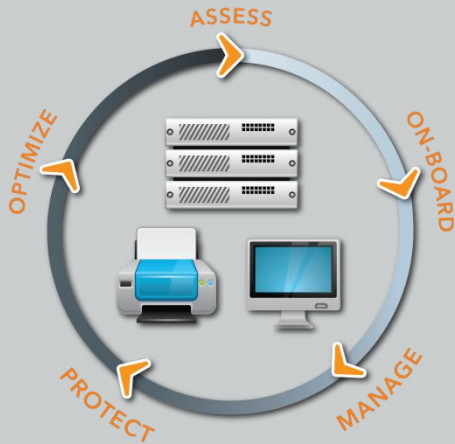
Records

Benefits of Managed Backup

- **Low Cost of Ownership**
Provides a fully managed data backup and restore solution for the same or less than purchasing a backup solution that you have to manage yourself.
- **Total Peace of Mind**
Thanks to centralized management and monitoring by our support team, you can rest assured that your business data is safe and being handled by experts. You can focus on your business, we'll focus on your backups.
- **Reduce Your Day-to-Day Operating Costs**
While most solutions require periodic or daily full backups, our solution only requires an initial full backup. After that, it stores only incremental file changes, saving you money in storage space, data transfer costs, and server load.
- **Safeguard Business Information**
Since the solution takes backups in terms of changes, you will be able to recover lost files, even older revisions.
- **Ensure Business Continuity**
Backup your most critical business applications to ensure that you can quickly restore systems that would have the most impact on your day-to-day operations if they were down.
- **Increase Productivity and Decrease Downtime**
With our rapid restore capabilities, we will minimize the costs associated with lost productivity and downtime.
- **Detailed Reporting Information**
No more wondering about how well your data is protected. We will provide you with monthly reports that let you know that your data is safe!



Device Lifecycle Management



Why our clients choose Allpro RMM Managed Backup

Reduced Costs

- Less storage space required
- Less bandwidth needed
- Recover to dissimilar hardware if needed

Improved Productivity

- Back up more data in less time
- Minimize downtime with faster restore times

Increased Awareness

- Centralized Monitoring and Management by our Allpro Technology LLC support team
- Detailed monthly reports on backup status

Increased Confidence

- Regular backups minimize business downtime in the event of a data loss
- Backups are always scheduled and managed by experts

"Allpro Technology became Missaukee County's Information Technology (IT) provider nearly one year ago, in June 2017. At that time, Missaukee County's IT function was not well organized and the county's technical needs had outgrown its previous delivery model. After a competitive Request for Qualifications (RFQ) process, Allpro Technology was selected as the county's preferred contracted provider, both on the basis of its skills and technical support options, as well as its competitive pricing.

During the past year, Missaukee County has seen tremendous improvements in its IT environment. Network administration is much more organized, computer resources have been inventoried, a plan has been developed for equipment replacement as needed, back-up protocols and programs have been initiated, and overall IT security is vastly improved. Allpro's staff are always helpful, timely and knowledgeable. If they don't have the solution immediately, they work until they do. We have been very pleased with the great service received by Allpro Technology and look forward to our continued partnership."

-Precia Garland, Missaukee County

Features	Remote Backup Manager
Initial Data Assessment and Plan	Our team will assess your critical data and develop a comprehensive backup plan to protect it.
Disk Based Backup Deployment and Configuration	Installation of our enterprise class disk based backup and recovery software.
Monthly Backup Capacity and Performance Reporting	Regular reporting demonstrating the effectiveness of the backup solution and ensuring efficient use of resources.
Monitored and Managed by our Network Operations Center	Our team will work in the background to ensure backups are successful and critical data is protected.
Remote Backup to Cloud	Important files and folders are stored in the cloud in case of critical failure.
Data Center Replication and Disaster Recovery Planning	Advanced Disaster Recovery options are available to eliminate the risk of data loss and protect your business.
Essential Support	Our support team is available to assist with all your support needs, delivering support remotely and actively monitoring your systems for critical failure.
<ul style="list-style-type: none"> • Attended and Unattended remote control for additional support • Asset Discovery and Reporting • Device Health Monitoring 	

Note: Backup planning and configuration will be billed at our standard hourly rate. Once setup, the backup service and backup monitoring will be billed as part of the Allpro RMM Managed Backup service plan.

Don't risk your business by being unprepared!

CONTACT US TODAY FOR A FREE QUOTE

©2018 Allpro Technology LLC - All Rights Reserved.



Allpro Technology LLC
 2425 S Blodgett Rd, Lake City, MI 49651
 Phone: 231-839-7928 Fax: 231-444-3133
info@allprotechnology.com
www.allprocomputerservices.com